

# KJM

---

## A861-AMFM

8 FOOT AM/FM  
MARINE ANTENNA  
Installation Guide



Supplied with 20' RG62 with pre-installed with FME connector and a Motorola plug

KJM is dedicated to providing the finest in shipboard equipment. Our products are built to withstand the harsh marine environment, and are designed by people with over three decades of experience in the marine industry.

**Please read the following pages before attempting installation to ensure complete understanding of the A861-AMFM Antenna.**

A861-AMFM antenna is a high performance 8 foot antenna designed to receive on Marine AM/FM channels. Supplied with 20' of low loss RG62 with pre-installed FME (mini UHF) connector and Motorola plug on the make the A861-AMFM antenna easy to install as there is no soldering needed.

## FEATURES

- Supplied with 20' of low loss RG62 and terminated with Motorola plug
- Brass radiators for maximum receive performance
- White 8 Foot marine VHF antenna
- 1"-14 chrome-plated brass ferrule
- FME male termination

## ACCESSORIES (included)



AC300  
20' Cable

## ACCESSORIES (not included)



M100  
Ratchet Mount



M200  
4' Straight Mount



AC300  
20' Cable

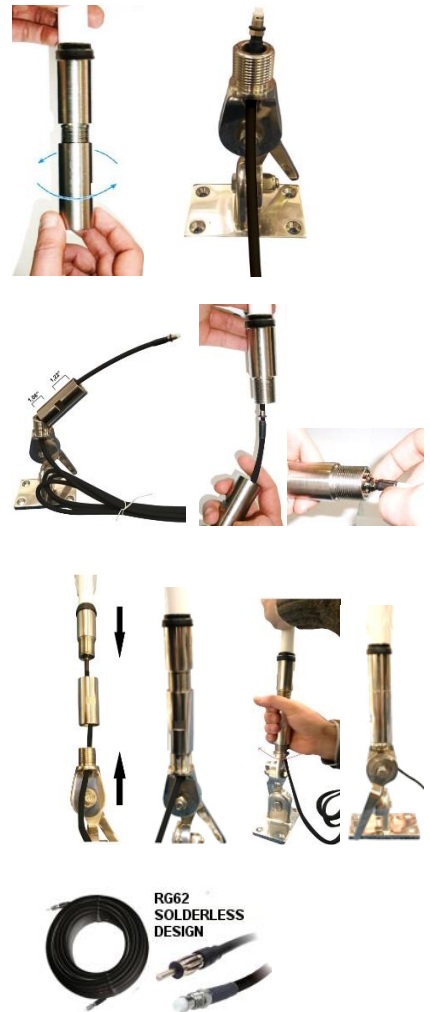
## INSTALLATION

For best performance:

- The antenna should be mounted as high as possible.
- Keep the antenna away from large metal objects and other radiating devices like RADAR, TV and GPS and other antennas.
- The A861-AMFM Antenna is supplied with 20 feet of RG62 low loss coaxial cable with pre-installed FME connector and a Motorola plug to simply installation (no soldering required).
- Do not shorten the 20' cable; instead simply coil and tie-wrap the excess cable in a secure location.
- Use optional AC300 20' cable extend the length. Up to 2 AC300 can connected.

**Quick and easy installation of the FME connector on the Antenna!**

1. Remove the lower part of the stainless steel ferrule unscrewing it clockwise
2. Install the mount on the place chosen for the antenna installation. Pass The end with the FME connector of the RG62 cable through the M100 ratchet mount hole
3. Pass the RG62 cable through the lower part of the ferrule. Pay attention: put the shortest part of the lower ferrule on the mount as shown on the picture
4. Screw the FME connector onto the base of the antenna until hand tight
5. Place the lower part of the ferrule between the upper part of the ferrule and the mount that was already installed on the boat.
6. Screw the lower part of the ferrule clockwise (as shown on the picture) so that the upper part of the ferrule and the mount will screw towards each other.
7. Connect the Motorola plug of the RG62 to the AM/FM receiver. If additional cable is needed use AC300 cable.



<b>FREQUENCY RANGE</b>	AM 550-1600 KHz / FM 88-108 MHz	<b>CONNECTOR</b>	FME connector and Motorola plug
<b>IMPEDANCE</b>	93 Ohms	<b>FERRULE</b>	1"-14 chrome-plated brass
<b>ANTENNA LENGTH</b>	8'	<b>CABLE LENGTH / TYPE</b>	20' / RG62
<b>RADOME</b>	Polished polyurethane		

Performance specifications are nominal and unless otherwise indicated, are subject to change without notice.

**WARRANTY / CONTACT**

KJM warrants its products to be free of defects in materials and workmanship for 5-years. KJM's obligation under this warranty is limited to repair or replace defective products. No material will be repaired or replaced without written authorization from KJM. Repair or replacement will be made only after an examination indicates defective material or workmanship at time of manufacture. KJM is in no event liable for consequential damages, installation costs or other costs of any nature incurred as a result of the use of the products manufactured by KJM, whether used in accordance with instructions or not. All shipping costs on returned material are the responsibility of the purchaser. KJM is not liable for repair or replacement of any product damaged by lightening, other natural phenomenon or incorrect installation including reverse polarity connections. This warranty is in lieu of all others, either expressed or implied. Proof of purchase is required.

KJM Holdings – [info@kjm-holdings.com](mailto:info@kjm-holdings.com) – [www.kjm-holdings.com](http://www.kjm-holdings.com)