

KJM

A430-V

4 FOOT VHF
MARINE ANTENNA
Installation Guide



Supplied with 20' RG-8X and
pre-installed FME connectors

KJM is dedicated to providing the finest in shipboard equipment. Our products are built to withstand the harsh marine environment, and are designed by people with over three decades of experience in the marine industry.

Please read the following pages before attempting installation to ensure complete understanding of the A430-V VHF Antenna.

A430-V antenna is a high performance 4 foot antenna designed to transmit and receive on Marine VHF channels. Supplied with 20' of low loss RG-8X and terminated with FME (mini UHF) connectors make the A430-V antenna easy to install as there is no soldering needed.

FEATURES

- White 4 Foot marine VHF antenna with 3dB Gain
- 1"-14 chrome-plated brass ferrule
- Brass radiators for maximum transmit and receive performance
- FME male termination
- Supplied with 20' of low loss RG-8X and terminated with FME (mini UHF) connectors

ACCESSORIES (included)



Adaptor FME male to PL259 male



UHF PL259 male crimp type connector



20 feet RG-8X coaxial cable with pre-installed FME connectors

ACCESSORIES (not included)



M100 Ratchet Mount



FME Double-Male Adapter

INSTALLATION

FCC Information:

The antenna must be located at least 3' away from passengers in order to comply with FCC RF exposure requirements.

For best performance:

- The antenna should be mounted as high as possible.
- Keep the antenna away from large metal objects and other radiating devices like RADAR and other antennas.
- The A430-V Antenna is supplied with 20 feet of RG-8X low loss coaxial cable with pre-installed FME connector on both sides for maximum radiation and interference rejection.
- Do not shorten the 20' cable; instead simply coil and tie-wrap the excess cable in a secure location.
- Use optional AC200 20' cable extend the length. Up to 2 AC200 can be connected.

Quick and easy installation of the FME connector on the Antenna!

Note: After installation it is recommended to have a qualified technician check the VSWR to ensure proper connections have been made.

1. Remove the chrome-plated brass ferrule from the antenna base
IMPORTANT: install the cable and the antenna on the mount before installing the mount on the place chosen for the antenna installation



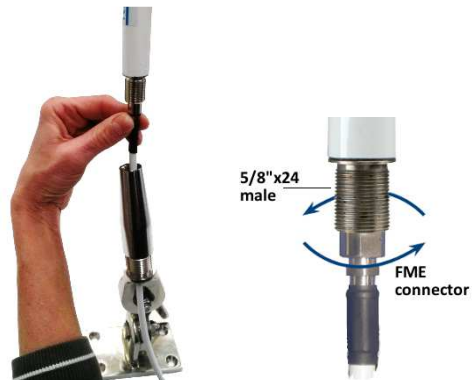
2. Pass one end of the RG-8X cable through the hole of the M100 ratchet mount, or compatible mount.



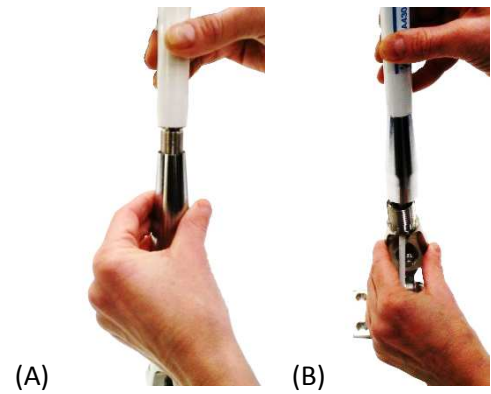
3. Pass the RG-8X cable through the chromed-plated brass ferrule



4. Screw the FME connector onto the base of the antenna until hand tight



5. Screw the chrome-plated brass ferrule on the antenna base (A) and place it on the mount (B)

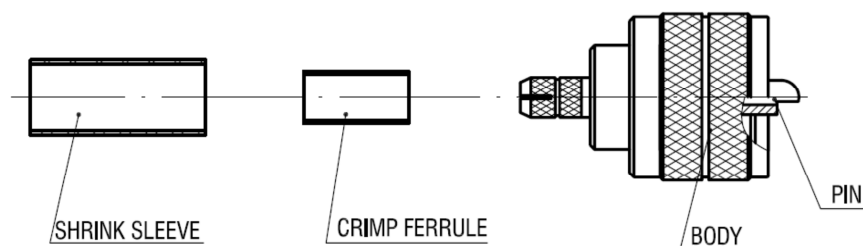


6. Screw the mount on the antenna ferrule. **IMPORTANT: WHEN SCREWING THE MOUNT, THE CABLE MUST NOT TURN; TO DO THAT YOU MUST MOVE THE CABLE EVERY TIME YOU GIVES A RIDE TO THE MOUNT, this avoid the cable damage**



7. Route the cable to the VHF radio. If there is excess cable, it is recommended to coil it in a gentle loop and secure
8. Connect the FME to PL-259 connector and to the VHF transceiver.

Note: It may be necessary to remove one FME connector to be able to fit through the cable guide hole on a ratchet mount. If this is the case, solder the PL-259 connector supplied with the antenna using the instruction below as guide:



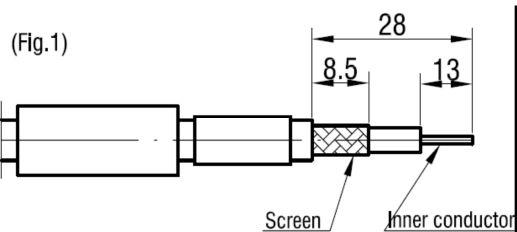


Fig.1
Trim cable to dimensions shown.
Slide crimp ferrule and shrink sleeve.
Braid wires and inner conductor.

(Fig.2)

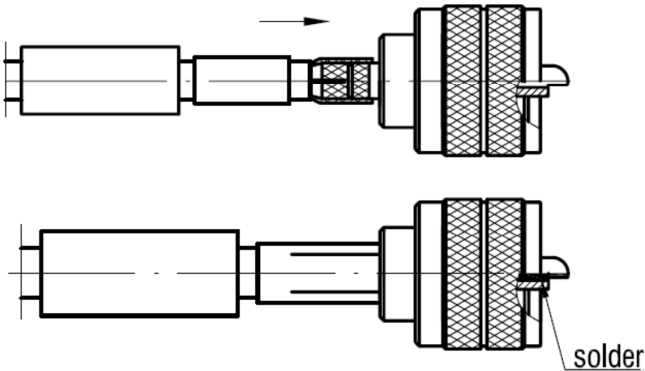


Fig.2
a) Insert assembly into connector body and push the crimp ferrule onto the cable braid wires.
b) Crimp shield layer by using crimping tools(0.311in.)
c) Solder the cable inner conductor into pin

(Fig.3)

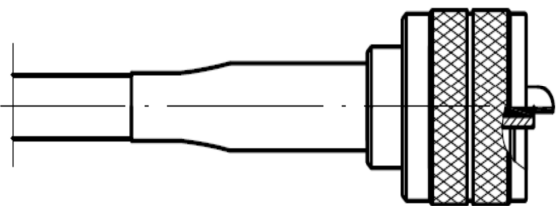


Fig. 3
Heat shrink sleeve rear of connector and down onto cable jacket using hot air gun.

SPECIFICATIONS	
FREQUENCY RANGE	156MHz to 162MHz
GAIN AVERAGE	3 dB
IMPEDANCE	50 ohms
POLARIZATION	Vertical
ELEMENTS	Brass and copper
SWR at 156.8MHz	1.3:1
DC GROUND	Yes
RADOME	Polished polyurethane
CONNECTOR	FME pre-installed on RG8X coaxial cable
FERRULE	1"-14 chrome-plated brass
CABLE LENGTH / TYPE	20' / RG-8X

Performance specifications are nominal and unless otherwise indicated, are subject to change without notice.

WARRANTY / CONTACT

KJM warrants its products to be free of defects in materials and workmanship for 5-years. KJM's obligation under this warranty is limited to repair or replace defective products. No material will be repaired or replaced without written authorization from KJM. Repair or replacement will be made only after an examination indicates defective material or workmanship at time of manufacture. KJM is in no event liable for consequential damages, installation costs or other costs of any nature incurred as a result of the use of the products manufactured by KJM, whether used in accordance with instructions or not. All shipping costs on returned material are the responsibility of the purchaser. KJM is not liable for repair or replacement of any product damaged by lightning, other natural phenomenon's or incorrect installation including reverse polarity connections. This warranty is in lieu of all others, either expressed or implied. Proof of purchase is required.