

KJM

A860-V

MARINE VHF ANTENNA Installation Guide



KJM is dedicated to providing the finest in shipboard equipment. Our products are built to withstand the harsh marine environment, and are designed by people with over three decades of experience in the marine industry.

Please read the following pages before attempting installation to ensure complete understanding of the A860-V Marine VHF Antenna.

FEATURES

- White 8 Foot marine band VHF antenna with 6dB Gain
- 1"-14 stainless steel ferrule
- Brass radiators for maximum transmit and receive performance
- Built-in 20' of low loss RG-8X and terminated with FME (mini UHF) connector

ACCESSORIES (included)



Adaptor FME male to PL-259 male



PL259 male solder connector

ACCESSORIES (not included)



M100 Ratchet Mount



FME Double-Male Adapter

INSTALLATION

FCC Information:

The antenna must be located at least 3' away from passengers in order to comply with FCC RF exposure requirements.

For best performance:

- The antenna should be mounted as high as possible.
- Keep the antenna away from large metal objects and other radiating devices like RADAR and other antennas.
- The A860-V Antenna is supplied with 20 feet of built-in RG-8X low loss coaxial cable with pre-installed FME connector on the termination for maximum radiation and interference rejection.
- Do not shorten the 20' cable; instead simply coil and tie-wrap the excess cable in a secure location.
- The cable may be extended using a double-male FME connector.
- Use RG-8X or RX213/U to extend the length.

Note: It may be necessary to remove one FME connector to be able to fit through the cable guide hole on a ratchet mount. If this is the case, solder the PL-259 connector supplied with the antenna using the instruction below as guide:

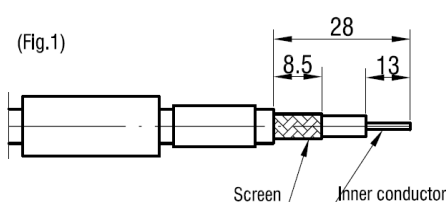
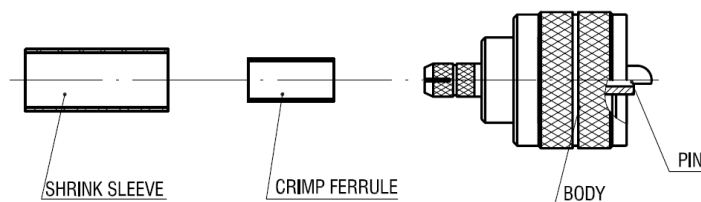


Fig.1
Trim cable to dimensions shown.
Slide crimp ferrule and shrink sleeve.
Braid wires and inner conductor.

(Fig.2)

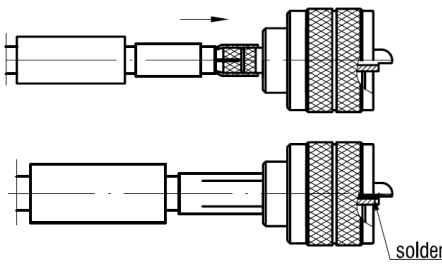


Fig.2

- a) Insert assembly into connector body and push the crimp ferrule onto the cable braid wires.
- b) Crimp shield layer by using crimping tools (0.311in.)
- c) Solder the cable inner conductor into pin

(Fig.3)

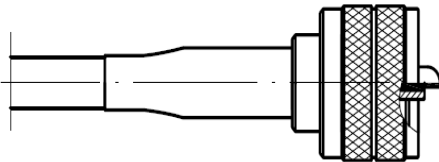


Fig. 3

Heat shrink sleeve rear of connector and down onto cable jacket using hot air gun.

SPECIFICATIONS	
FREQUENCY RANGE	156 - 162 MHz
GAIN AVERAGE	6 dB
IMPEDANCE	50 ohms
POLARIZATION	Vertical
ELEMENTS	Brass and copper
SWR at 156.8MHz	1.3:1
DC GROUND	Yes
RADOME	Polished polyurethane
CONNECTOR	Pre-installed FME connector, connects to PL-259 adapter
FERRULE	1"-14 threaded stainless steel
CABLE LENGTH / TYPE	20' built-in RG-8X with a pre-installed FME connector

Performance specifications are nominal and unless otherwise indicated, are subject to change without notice.

WARRANTY / CONTACT

KJM warrants its products to be free of defects in materials and workmanship for 5-years. KJM's obligation under this warranty is limited to repair or replace defective products. No material will be repaired or replaced without written authorization from KJM. Repair or replacement will be made only after an examination indicates defective material or workmanship at time of manufacture. KJM is in no event liable for consequential damages, installation costs or other costs of any nature incurred as a result of the use of the products manufactured by KJM, whether used in accordance with instructions or not. All shipping costs on returned material are the responsibility of the purchaser. KJM is not liable for repair or replacement of any product damaged by lightening, other natural phenomenons or incorrect installation including reverse polarity connections. This warranty is in lieu of all others, either expressed or implied. Proof of purchase is required.

KJM MARINE
 7137 24TH Court East
 Sarasota, FL 34243

info@kjm-holdings.com